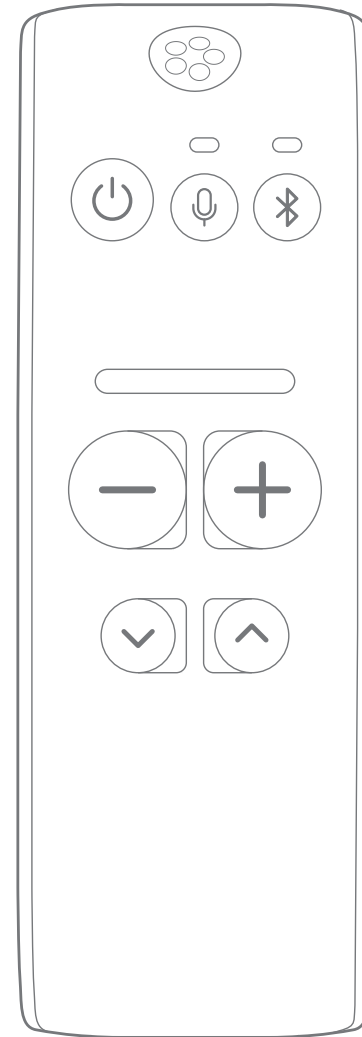


BE2021  
Maxi Pro personal amplifier  
Bellman & Symfon Group AB





## Important safety instructions

This section contains important information about safety, handling, disposal, recycling and warranty.



**Note:** Read all safety information and instructions below before using the product. Keep the user manual for future use.

### Warning!

- This device has a very powerful amplifier and the sound level can cause discomfort or, in serious cases, endanger hearing if the product is used carelessly. Always turn the volume down to a low level before putting on the headphones!
- Use of this equipment adjacent to or stacked with other equipment should be avoided because it could result in improper operation. If such use is necessary, this equipment and the other equipment should be observed to verify that they are operating normally.
- Use of accessories, transducers and cables other than those specified or provided by the manufacturer of this equipment could result in increased electromagnetic emissions or decreased electromagnetic immunity of this equipment and result in improper operation.
- Portable RF communications equipment (including peripherals such as antenna cables and external antennas) should be used no closer than 30 cm (12 inches) to any part of the Maxi Pro BE2021, including cables specified by the manufacturer. Otherwise, degradation of the performance of this equipment could result.
- Failure to follow these safety instructions could result in fire, electric shock, or other injury or damage to the product or other property.
- Do not use or store this product near any heat sources such as naked flames, radiators, ovens or other devices that produce heat.
- Protect the cables from any potential source of damage.

- Use only power adapters and accessories specified in this manual.
- Only refer a damaged or faulty product to qualified service personnel.
- Do not dismantle the product; there is a risk of electric shock. Tampering with or dismantling the product will void warranty.
- This product is designed for indoor use only.
- Do not expose the product to moisture.
- Protect the product from shocks during storage and transport.

### Care and cleaning



**Note:** Failure to follow these care and cleaning instructions could result in damage to the product and void the warranty.

### Battery charging and replacement



**Warning!** The Maxi Pro is powered by a rechargeable lithium-polymer battery. Do not expose the battery to fire or to direct sunlight. The battery should only be changed by Bellman & Symfon or an authorized service center. There is a risk of explosion if the battery is not replaced correctly. The battery should be charged fully before using the product for the first time. Only charge the battery in a temperature between 0°– 35°C, 32°– 95° F.

### Using the product

Operating environment: 0°– 35° C with an atmospheric pressure of 700hpa - 1060hpa. Transport and storage environment: -10°– 50° C with an atmospheric pressure of 700hpa - 1060hpa. Do not use or store the products near a heat source. If the product gets wet or is exposed to moisture, it should be replaced.

### Cleaning

Use a soft, lint-free cloth. Avoid getting moisture in openings. Don't use window cleaners, household cleaners, aerosol sprays, solvents, alcohol, ammonia, or abrasives.

### Service and Warranty

If the product appears to be damaged or doesn't function properly, follow the instructions in this leaflet. If the product still doesn't function as intended, contact your local dealer for information on service and warranty.

### Warranty Conditions

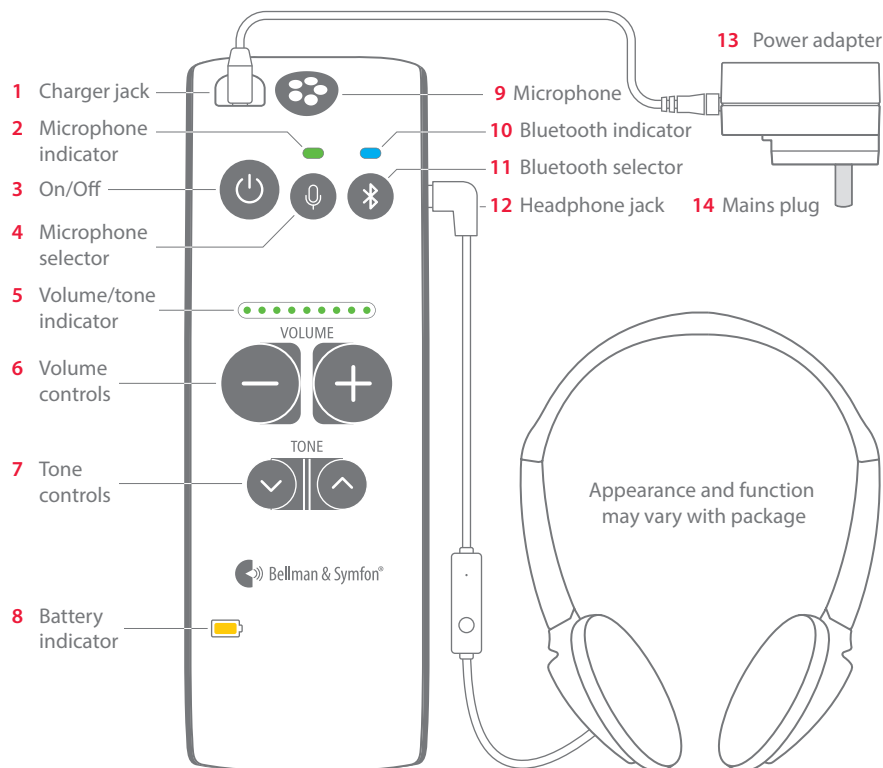
Bellman & Symfon guarantees this product for two (2) years from date of purchase against any defects that are due to faulty materials or workmanship. This guarantee only applies to normal conditions of use and service, and does not include damage resulting from accident, neglect, misuse, unauthorized dismantling, or contamination howsoever caused. This guarantee excludes incidental and consequential damage. Furthermore, the warranty does not cover Acts of God, such as fire, flood, hurricanes and tornadoes.

This warranty gives you specific legal rights and you may also have other rights that vary with territory. Some countries or jurisdictions do not allow the limitation or exclusion of incidental or consequential damages, or limitations on how long an implied warranty.

### Model, type and classification

The information is available at the back of the product.

## Overview



## About Maxi Pro

Maxi Pro is a digital conversation amplifier that brings out the words so you can hear them loudly and clearly. Use Maxi to enhance the speech around the table, when you talk on the mobile phone or when you watch TV.

## Getting started

### Step 1: Charge Maxi

- 1 Connect the charging cable to the power adapter (13) and to the charger jack (1) marked in yellow.

- 2 Fit the mains plug (14) to the power adapter (13) and connect it to the power outlet.
- 3 The battery indicator (8) blinks in green during charging. After about three hours it emits a steady green light to show that Maxi is fully charged.

### Step 2: Connect Maxi

Connect the supplied headphones, earphones, headset, earset or neck loop to the Maxi headphone jack (12) marked in green.

### Step 3: Start Maxi

Press the On/Off button (3) for about one second to start Maxi. The microphone indicator (2) lights up in green and the current volume is shown by the volume/tone indicator (5) for three seconds.

To switch Maxi off, press and hold the On/Off button (3) for about three seconds until all indicators go out.

## Using Maxi to clarify speech

Maxi is equipped with a built in omni-directional microphone (9) that enhances speech. Place Maxi on a table close to the person talking, hold it in your hand or attach it to your clothes using the clip.

### Adjusting the volume

Press **+** on the volume controls (6) to increase the volume and **-** to decrease it. The microphone volume can be adjusted in 9 steps and the TV and mobile phone volume in 15 steps. The level is shown in the volume/tone indicator (5).

**Note:** Every time you turn on Maxi, the volume is set to low to avoid unpleasant sound levels.

### Adjusting the tone

Press the **^** on the tone controls (7) to increase the treble and the **v** to decrease it. The treble can be adjusted in 5 steps and is visible in the volume/tone indicator (5).

**Note:** Increasing the treble makes the S, F and T sounds more pronounced and the words easier to make out.

## Using Maxi with your mobile phone

### Pairing

- 1 Make sure your Maxi is in microphone mode by pressing the microphone selector (4).

- 2 Press and hold the Bluetooth selector (11) until the Bluetooth indicator (10) starts to blink in blue.
- 3 Make sure Bluetooth is activated on your mobile phone. Open the Bluetooth menu in Settings and select "Maxi Pro" in the list.
- 4 The Bluetooth indicator will emit a steady blue light to show that the pairing was successful.

**Note:** If your phone has been disconnected from Maxi, you might need to reconnect it by repeating step 3 to 4.

### Answering a phone call

- 1 When the mobile phone rings, the Maxi Bluetooth indicator (10) blinks in blue. All other sounds are muted and you'll hear the ring signal in your headphones.
- 2 To **answer** the call, press the Maxi Bluetooth selector (11) or use the remote on your headset. You will now hear the enhanced voice of the caller in your headphones. Your voice will be picked up by the headset or the Maxi microphone.
- 3 To **hang up**, press the Bluetooth selector once more.

**Note:** To **decline** an incoming call, press and hold the Maxi Bluetooth selector for 3 seconds.

### Making a phone call

When you talk on the mobile phone, you hear the enhanced voice of the recipient in your headphones. Your voice will be picked up by the Maxi microphone.

### Streaming music

Play a song on your mobile phone and press the Maxi Bluetooth selector (11) to hear the music. A second press could be needed if another Bluetooth source also is connected.

### Using a headset with microphone

When you talk over the phone, the sound will be picked up from the headset remote microphone instead of the Maxi microphone.

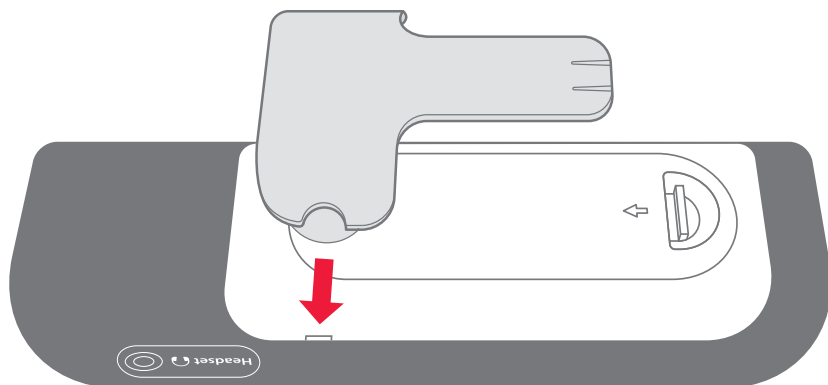
## Using Maxi for TV listening

In order to stream the sound from your TV, you need a Maxi Pro TV streamer, see separate user manual for installation instructions.

### Listening to the TV

Turn on the TV, select a show and press the Maxi Bluetooth selector (11) to hear the TV. A second press could be needed if another Bluetooth source also is connected.

**Note:** If you get a call during the show, the sound from the TV will be muted, so you can hear the caller's voice clearly. When you hang up, the sound from the TV will automatically come back.



## Care and maintenance

### Using the product

**Note:** Maxi Pro can produce high sound levels. Please use with care. Increase the volume level gradually to a comfortable level. Exposure to high sound levels can damage your hearing.

Ensure that small parts are kept out of reach from children.

Operate the product in a dry environment where the temperature is always between 0° and 35° C.

### Automatic reconnection

Maxi will automatically reconnect to your TV streamer as soon as it's within range, so you can bring Maxi when you visit family and friends without hassle.

## Battery and charging

Maxi is equipped with a rechargeable battery that lasts for up to 70 hours. When the battery indicator (8) starts to blink in red, it's time to charge it, see **Charge Maxi**.

## Attaching the clip

To attach the clip, place the clip against the back cover and press firmly until it locks. To remove it, pull the round handles out from the sides.

### Cleaning

Clean the product with a soft, lint-free cloth. Avoid getting moisture in openings.

### Service and warranty

If the product appears to be damaged or doesn't function properly, follow the instructions in this leaflet. If the product still doesn't function as intended, contact your local dealer for information on service and warranty.

## Troubleshooting

Most problems with Maxi Pro can be solved quickly by following the advice below.

If	Try this
I can't get the units to pair via Bluetooth.	<ul style="list-style-type: none"><li>Make sure that your Maxi is in microphone mode by pressing the microphone selector (4). Try pairing the units again by following the steps in the section <b>Pairing</b>.</li></ul>
Nothing happens when I press the Maxi On/Off button.	<ul style="list-style-type: none"><li>The batteries are depleted. Charge Maxi, see <b>Charge Maxi</b>.</li></ul>
The Maxi battery indicator is blinking in red.	<ul style="list-style-type: none"><li>The battery level is low. Charge Maxi, see <b>Charge Maxi</b>.</li></ul>
I hear no sound in my headphones, even though Maxi is turned on.	<ul style="list-style-type: none"><li>First, make sure the volume is at the required level. Then, check that the headphone plug is properly connected to the Maxi headphone jack (12).</li><li>Increase the volume by pressing the + on the Maxi volume controls (6).</li><li>Connect the headphones to another device, like a smart phone, and check if you hear any sound. If not, the headphones may need to be replaced.</li><li>If Bluetooth mode is selected, make sure that the TV streamer or mobile phone is within range, paired and streaming a sound.</li></ul>
I don't hear the mobile phone in my headphones.	<ul style="list-style-type: none"><li>Make sure Bluetooth is activated on your mobile phone and that it is paired with your Maxi, see <b>Pairing</b> in the <b>Using Maxi with your mobile phone</b> section.</li></ul>
I don't hear the sound of the TV in my headphones.	<ul style="list-style-type: none"><li>Make sure the TV streamer is within range and paired with your Maxi, see <b>Pairing</b> in the <b>Using Maxi for TV-listening</b> section.</li></ul>
The sound from the TV or mobile is too low, even though the Maxi volume is at the highest level.	<ul style="list-style-type: none"><li>Try to increase the volume on your TV or mobile phone instead.</li></ul>
I hear a high-pitched noise in my headphones.	<ul style="list-style-type: none"><li>Lower the volume or increase the distance between Maxi and the headphones.</li><li>Direct the Maxi microphone (9) away from you.</li></ul>
Maxi seems unresponsive/frozen.	<ul style="list-style-type: none"><li>Press and hold the On/Off button (3) for ten seconds until Maxi turns off.</li><li>Press the On/Off button for about one second to start Maxi again.</li></ul>

## Technical specifications

### Intended Use

Personal sound amplification product that enhances speech to facilitate listening during conversations, telephone calls and television viewing.

### Dimensions and Weight

Size: 140 × 27 × 45 mm, 5.5 × 1.1 × 1.8"  
Weight: 127g, 4.3 oz.

### Frequency and Coverage

Bluetooth frequency: 2402 – 2480 MHz  
Coverage: Up to 25 m, 27.5 yd, free field.  
Connectivity: Qualcomm® aptX™ LL

### Power Supply

Input: 100 – 240V~, Output: DC 5V, 1.0A  
Battery power: 2 × 3.7V 750mAh Li-on  
Operating time: Up to 70 h  
Power consumption: 18 mA

### Connections

Headphones input: 3.5 mm mini-stereo jack  
Charger input: 2.5 mm jack

### Microphone

Built-in omnidirectional microphone

### Output level with BE9229

135dB @ 1kHz (SPL90)  
136dB (HF Ave. SPL90)  
Full-on gain: 49dB @ 1kHz,  
Ref. test gain: 49dB @ 1kHz (SPL70)

### Output level with BE9233

122dB @ 1kHz (SPL90)  
127dB (HF Ave. SPL90)  
Full-on gain: 36dB @ 1kHz  
Ref. test gain: 36dB @ 1kHz (SPL70)

### Mic SNR

53dB @ 1kHz 1% THD (electrical)

### Distortion

0.2% THD @ 1kHz – 6dB @ 1% THD (Mic electrical)

### Bluetooth SNR

85dB @ 1kHz 1% THD (BT with TV streamer)  
Freq. range: 20Hz–8kHz (Mic), 20Hz–20kHz (Bluetooth)  
Output power: Max 82mW @ 1kHz / 16Ω (THD=1%)

### Environmental Requirements

Operating temperature: 0° – 35° C, 32° – 95° F  
Relative humidity: 15% – 90% (non condensing)

## FCC compliance statement

FCC ID: 2APAKBE2021

This device complies with Part 15 of the FCC Rules. Operation is subject to the following two conditions: (1) this device may not cause harmful interference, and (2) this device must accept any interference received, including interference that may cause undesired operation.

**Warning:** Changes or modifications not expressly approved by the party responsible for compliance could void the user's authority to operate the equipment.

**Note:** This equipment has been tested and found to comply with the limits for a Class B digital device, pursuant to Part 15 of the FCC Rules. These limits are designed to provide reasonable protection against harmful interference in a residential installation. This equipment generates, uses and can radiate radio frequency energy and, if not installed and used in accordance with the instructions, may cause harmful interference to radio communications. However, there is no guarantee that interference will not occur in a particular installation. If this equipment does cause harmful interference to radio or television reception, which

can be determined by turning the equipment off and on, the user is encouraged to try to correct the interference by one or more of the following measures:

- Reorient or relocate the receiving antenna.
- Increase the separation between the equipment and receiver.
- Connect the equipment into an outlet on a circuit different from that to which the receiver is connected.
- Consult the dealer or an experienced radio/TV technician for help.

## Bluetooth® certified

This device includes a Bluetooth module which has passed the BQB certificate. The Bluetooth word mark and logos are owned by the Bluetooth SIG, Inc., and any use of such marks by Bellman & Symfon is under licenses.

## Configuration options

These devices can be configured with the following original accessories:

- BE9233 Headset with microphone, black
- BE9229 Earphones with mic. black
- BE9159 Neck loop, 90 cm cable, black
- BE9161 Neck loop, 15 cm cable, black
- BE9254 Single charger cord, white
- Power adapter, white
- USA plug, white
- AU plug, white

### Bellman & Symfon Asia Ltd.

1401-06, Main Tower, GD Int'l Bldg  
339 Huanshi Dong Rd  
Guangzhou, China, 510095  
Phone: +86 20 8318 2950  
Fax: +86 20 8333 5528  
E-mail: info.cn@bellman.com

### Bellman & Symfon North America Inc.

5509 Business Dr, Unit B  
Wilmington, NC 28405  
Unites States  
Phone: +1 (910) 239 5796  
Toll-free: + (833) 235 5626  
E-mail: support.bsn@bellman.com



# DESIGN FOR EARS™



## Manufacturer

Bellman & Symfon Group AB  
Södra Långebergsgatan 30  
436 32 Askim Sweden  
Phone: +46 31 68 28 20  
E-mail: [info@bellman.com](mailto:info@bellman.com)  
[bellman.com](https://bellman.com)



Revision: BE2021-A\_010MAN1.0

Date of issue: 2023-05-18

TM and © 2023 Bellman & Symfon AB.

All rights reserved.